



Understanding  
Our Natural World  
Est. 1880

# Field Nats News No.261

Newsletter of the Field Naturalists Club of Victoria Inc.

1 Gardenia Street, Blackburn Vic 3130

Telephone 03 9877 9860

P.O. Box 13, Blackburn 3130 [www.fncv.org.au](http://www.fncv.org.au)

Newsletter email: [fnnews@fncv.org.au](mailto:fnnews@fncv.org.au)

(Office email: [admin@fncv.org.au](mailto:admin@fncv.org.au))

Editor: Joan Broadberry 03 9846 1218

Founding editor: Dr Noel Schleiger

Reg. No. A0033611X

Patron: The Honourable Linda Dessau, AM  
Governor of Victoria

Office Hours: Monday and Tuesday 9.30 am - 4 pm.

March 2016

## From the President

Fellow Naturalists, welcome to the March edition of the FNN. The year is well and truly off to a good start. The high calibre of the SIG presentations has continued with a Juniors' meeting populated with live mantids and large stick insects. The presentation on Australian Fur Seals at the FSG meeting was excellent. I urge everyone to attend as many meetings as possible to enjoy the informative presentations and support our activities.

After more than seven years our office now has a new, updated computer network which should enable us to more efficiently administer the activities of the Club in these times of total dependence upon rapidly evolving technology.

A subcommittee of the FNCV Council is well on the way to producing a revised manual for the risk management and conduct of our activities. As most of us already realise and fully understand, there are inherent risks in many of the activities undertaken by the Club. These include the hazards peculiar to the nature of the specific activities and those general hazards that are common to most activities. Members working with vertebrates, invertebrates, fungi, marine organisms and microorganisms are exposed to biological hazards of various kinds. There are also the physical risks associated with working in or on water, working at height, lifting heavy objects, handling dangerous goods, hazardous substances, dusts and the usual slips trips and falls. We need to have clear, documented procedures and strategies for mitigating our risks; in particular when it comes to minors and non-members (the public) joining in

our activities. We also have obligations to comply with wildlife and animal welfare legislation and conditions of permits that we hold.

You will all be given an opportunity to respond to the draft documentation when it is available. The intention is not to make it more difficult to do things but rather to meet our ethical, regulatory and organisational responsibilities to both members and public alike by having clear, documented policies, procedures, guidelines and training/instruction for participants in field activities. We also need to include the basic safety rules for running meetings and other routine activities.

On another matter, I came across a visitor to my garden that I have not seen for years, a Cowboy Beetle, *Chondropyga dorsalis* (*Diaphonia dorsalis*), (above). There have also been quite a few Bee Flies (*Bomylidae* sp.) (below) this year.



M.Campbell



M.Campbell

The deadline for FNN 262, April 2016 will be **10 am on Tuesday 1st March 2016**. Note the first Tuesday is early this month. We will be going to the printers on Tuesday 8th March and collating on Tuesday 15th March.

Index	Page
From the President	1
Calendar of Events	2
Members' news, photos & observations.	3
Extracts from SIG reports to Council. <i>Day &amp; Juniors' Groups</i>	4
<b>Index for Issues 249 (Feb.) – 259 (Dec./Jan.), 2015-16</b>	5-8
Environment Fund—call for applications; From the office	9
<b>Fungi Group News:</b> Foray to White's Corner (nr. Geembrook); SEANA/ANN	10-11
Marine Research Group	12



## CALENDAR OF EVENTS

**All meetings are held at the FNCV Hall, 1 Gardenia St. Blackburn at 8 pm., unless otherwise indicated. On days of extreme weather conditions, excursions may be cancelled. Please check with leader.**

### MARCH 2016

**Tuesday 1<sup>st</sup> - Fauna Survey Group—Meeting: *Wildlife in the Congo*.** Speaker Dr Mark Antos, Parks Victoria. Contact Robin Drury 0417 195 148; robindrury6@gmail.com

**Friday 4<sup>th</sup> - Fauna Survey Group—Survey: *Melbourne Bioblitz, City of Melbourne*.**  
Contact Robin Drury 0417 195 148; robindrury6@gmail.com

**Monday 7<sup>th</sup> – Fungi Group—Meeting: *What the fungus? Dealing with identification uncertainty on fungal forays*.** Speaker Dr Tom May, Senior Mycologist at Royal Botanic Gardens Melbourne and President of the Fungimap management committee. Contact Virgil Hubregtse 9560 7775

**Saturday 12<sup>th</sup> to Monday 14<sup>th</sup> - Fauna Survey Group—Excursion: *A survey to look for Leadbeater's Possum, gliders, owls and other nocturnal wildlife*.** Contact Ray Gibson 0417 861 651  
**Prior Registration Essential.**

**Sunday 13<sup>th</sup> to Wednesday 16<sup>th</sup> - Marine Research Group—Field Work: *Inverloch area*.**  
For details of locations and meeting times, contact Leon Altoff 9530 4180 AH; 0428 669 773

**Monday 14<sup>th</sup> - Marine Research Group—No Meeting: *Labour Day***

**Tuesday 15<sup>th</sup> - Collate FNN.** Starting about 10.00 am. All welcome. Contact Joan Broadberry 9846 1218

**Wednesday 16<sup>th</sup>—Terrestrial Invertebrates Group—Meeting: *Photographing and Identification of Dragonflies in the Wild*.** Speaker Reiner Richter. Contact Max Campbell 0409 143 538; 9544 0181; mcam7307@bigpond.net.au

**Thursday 17<sup>th</sup> – Botany Group—Meeting: *Mosses 101: a workshop*.** Speaker Mary Gibson.  
Contact Sue Bendel 0427 055 071

**Monday 21<sup>st</sup> - FNCV Council Meeting** - 7.30 pm sharp. Agenda items and apologies to Wendy, 98779860 or admin@fncv.org.au

**Tuesday 22<sup>nd</sup> – Day Group—Meeting: *Fabulous Fungi*.** Speaker Ian Bell. Meet 10.30 am for coffee and a chat. Speaker at 11 am. Contact Joan Broadberry 9846 1218

**Wednesday 23<sup>rd</sup> – Geology Group—Meeting: *Formation of Gold Deposits*.**  
Speaker Dr. Neil Phillips, Consultant with Phillipsgold Pty Ltd and Professorial Fellow with the School of Earth Sciences, the University of Melbourne. Contact Ruth Hoskin 9878 5911; 0425 729 424; rroskin@gmail.com

**Friday 25<sup>th</sup> to Monday 28<sup>th</sup> – Juniors' Group—Excursion: *Easter Camp*.** Venue: Clarkesdale (Birdlife property). Contact: Claire Ferguson 8060 2474; toclairref@gmail.com

**Friday 25<sup>th</sup> to Tuesday 29<sup>th</sup> - Fauna Survey Group—Survey: *Parker River Heathlands. Great Otway National Park*.** Prior Registration Essential. Contact: Ray White 9308 3770



**The policy of the FNCV is that non-members pay \$5 per excursion and \$3 per meeting, to contribute towards Club overheads. Junior non-member families, \$4 for excursions and \$2 per meeting.**



## Members' news, photos & observations

We always have space for member photos and natural history observations. Please share with us what you have noted in your daily life, travels or garden. Email: [fnnews@fncv.org.au](mailto:fnnews@fncv.org.au) by the first Monday in the month.

Welcome  
Welcome

**Warmest greetings to these new members who were welcomed into our club at the last Council meeting:**

*Ivaan Sethi, Aryan Sethi, Dr. Moksh Sethi, Dr. Jasdeep Sandhu, Prof. Catriona McLean, Miles Desailly, Philip Widmer, Callan Brown, Karen Retra, Simon Dwyer, James Bateson, Dr. Noushka Reiter, Tiger Durie, Dr. John Wright, Josephine Wright, Edward Wright, Amelia Wright, Dr. Liz Wright, Sue Forster, Kathryn Jennings, Anne Marie MacArthur, Matthew Davey, Goh Hoo, Joel Drew, Prof. James Murray-Parkes, Tyson Infanti, Susana Guell, Sara Whitburn, Tamsin Whitburn*

### Vale—Alison Houghton

The FNCV Council was greatly saddened to hear of the recent death of Alison Houghton. Alison was the daughter of Club Librarian & Archivist and honorary member, the late Sheila Houghton and her husband Neville. Although not a member of the Club herself, Alison was close to her mother and often provided invaluable assistance in Sheilas' endeavours on behalf of the FNCV.

Alison was of direct assistance to the Club in 2009/2010, in undertaking a major project to record the memories of 50 long-term members. The conversations were recorded on tape and subsequently transcribed; both the tape and texts are now stored in the FNCV archives. Alison presented the results of her project to the AGM on May 2011.

We extend our deepest condolences to Neville Houghton and family, and particularly to Alison's children.

### Many thanks to those who helped collate and label FNN260

Sheina Nicholls  
Gary Presland  
Denise Carew  
Jackie Waring  
June Anton  
Ros Savio  
Sarah Moser  
Ray Gibson  
Cecily Falkingham  
Su Demsey  
Barbara Burns  
Frank Holmes  
Margaret Corrick  
Andy Brentnall  
Philippa Burgess  
Alexander Sterpin

Photo: J. Broadberry



### AFTERNOON SQUALL

The image on the left is not a black and white photo. It was taken on Boxing Day (26th December) 2015 during the Marine Research Group survey on the Shoreham rock platform.

A sudden squall hit and the group scattered and headed for the shelter of the cars.

As so often happens the drama was soon over and the more intrepid went back out to complete the survey.

We were all more or less dry when it was time to draw up a list of the fascinating intertidal life observed during the very low tide. JB.

## Extracts from SIG reports given at the last FNCV Council Meeting

### DAY GROUP

Maria Gibson spoke on the topic of *Adventures on the Cooper* at the November 2015 meeting of the Day Group. Cooper Creek is one of three major Queensland river systems that flow into the Lake Eyre Basin in Central Australia. The flow of the creek depends on monsoonal rains falling months earlier and many hundreds of kilometres away. Maria and her husband Gary paddled a section of the flooded Creek in two kayaks. It was just the two of them. They carried all their camping equipment and their food and water in the boats. Because of the floodwaters, the channel of Cooper Creek was sometimes not obvious, so precise navigation was essential. Maria's lively presentation detailing their adventures was illustrated with many wonderful images of the landscapes they passed through. The meeting was attended by 21 people including two visitors.

Joan Broadberry

### JUNIORS' GROUP January 2016

On January 24th we had a beach day at Black Rock pier to start the New Year. Due to the below average summer temperature that day we had a small group of 18 enthusiastic beach lovers. We found many interesting things including seahorses, crabs, sea stars, ray, cow fish ) and looked at seaweeds, sponges and mites through our microscopes. My favourite find was a Ringback Pipefish as I hadn't seen one before. (See two images below) Most of us enjoyed some hot chips afterwards and a walk around the dramatic cliffs surrounding half moon bay.

Claire Ferguson.



Photos: C. Ferguson



Thanks to the editorial and layout team who put together FNN 261

Joan Broadberry  
Wendy Gare

*Special thanks to Max & Struan for the many, many hours spent on the computer upgrade.*





**FIELD NATS NEWS**  
**Index for Issues 249 (February) – 259 (December/January), 2015-16**  
*Compiled by Pat Grey*

(Reports of Special Interest Group activities (SIGS), are listed chronologically according to FNN issue)

Altoff, Leon: *Photo Credits: Lucernariopsis tasmaniensis, Lucernariopsis sp., Depastroporpha Africana, Depastromorpha sp., Stenoscaphus sp, Unknown, Burnaia helicochorda* **250:13.**

**AUSTRALIA DAY AWARDS:** Congratulations to Peter Marriott made a Member of the Order of Australia (AM), and Cam Beardsell awarded a Medal of the Order of Australia (OAM) **250:14.**

**AUSTRALIAN NATURAL HISTORY MEDALLION:** Invitation to Margaret MacDonald OAM presentation **257:12;** Presentation of 2015 Medallion to Margaret MacDonald by Dr Bill Birch (illus) **259:11.**

*Photos:* Receiving of Medallion, Margaret's presentation **259:11.**

**AUSTRALIAN NATURALISTS' NETWORK:** notice of get-together October 2016 **259:3.**

Bewsher, Sally: Award from Parks Victoria for work by the Fauna Survey on the Eastern Fauna Focus Project (illus)

**250:3;** Lace Monitor (illus) **251:4.** *Photo Credits:* Microbat *Flasistiellus tasmaniensis* **249:7;** Robin Drury receiving Award to Fauna Survey Group **250:3;** Lace Monitor **251:4.**

**BOTANY GROUP: Reports to Council:** Survey at Trust for Nature property in Blacksands Road, Three Bridges **249:7;**

Fantastic plants and their adaptations by Dr Mary Gibson **251:10;** Ferns of Victoria by Daniel Ohlsen **252:8;** Orchid Conservation RBG by Noushka Reiter **253:7;** Cool Temperate Rainforests by Maggie Riddington **254:11;** Collection of Indigenous seeds by Heather Eadon **257:10;** Biodiversity of the Brisbane Ranges by Cathy Powers **259:6.**

Bray, Dianne: *Photos Credits: Coelorinchus kaiyomaru, Idiacanathus atlanticus* **256:11.**

Brentnall, Hazel & Edward: Day Group - Middlebrook – An adventure in Conservation **255:10-11.**

*Photo Credits:* Bass Valley, Dwelling, Nodding Greenhoods **255:10-11.**

Broadberry, Joan: Observations from January **249:3;** vale notice for Suzanne Clark **251:3;** SEANA report (illus) **252:3;**

*Day Group Reports:* **251:8-9; 252:9&12; 257:5-6; 259:7.**

*Photo Credits:* Little Falcon chick, Rainbow Lorikeet in Red Flowering Gum **249:3;** Christmas Party 2014 **249:8;** Dr Kylie Soanes, **251:1;** 'Mammals of Victoria' speakers, page of illustrations from Mt Rothwell excursion **251:6-7; 252:3;** Musk Duck **252:3;** Max Campbell **253:1;** Compiling records, lab work **255:13;** group with microscopes **257:5-6;** Group processing Bats, Andrej & Ruby **258:9;** Cecily & group, *Brunonia australis, Dianella revoluta* **259:7.**

Buckeridge, Professor John: led Geology Group excursion to Beaumaris **257:4-5.**

Burgess, Philippa: Day Group - Intro to Microscopy **257:5-6**

Burns, Barbara: Thanked the volunteers at the working bee **256:3.**

*Photo Credits:* Group of Fauna Survey members **259:10**

Burns, Phoebe: Where there's fire there's Smokie (illus) **258:7.**

*Photo Credits:* Smoky Mouse **258:7.**

**CALENDAR OF EVENTS: MONTHLY:** **249:2; 250:2; 251:2; 252:2; 253:2; 254:2; 255:2; 256:2; 257:1; 258:2; 259:2.**

**CALENDAR OF EVENTS: FOUR-MONTHLY:** reminder to send in details for June-September **251:9**

Campbell, Maxwell: *From the President:* (illus) **253:1&5;** (illus) **254:1;** (illus) **255:1&3;** (illus) **256:1;** (illus) **257:1;** (illus) **258:1;** (illus) **259:1.**

Thanks to Working Bee helpers 15/6/15 **255:3;** Day Group - An Introduction to Invertebrates with Special Reference to Leaf

Litter Fauna (illus) by Maxwell Campbell **250:8 & 13** - Intro to Microscopy **257:5-6**

*Photo Credits:* Pseudoscorpion, *Paramecium bursaria* **253:1&5;** 2014/2015 Council Members **253:8;** *Mycena subgalericulata* **254:1;** *Chlorohydra viridissima* 1 & 2, *Chlorohydra* sp. budding **255:1&3;** female mantis **256:1;** aphids, Mantids hatching, Huntsman spider with egg case **257:1;** Hover-fly larva attacking aphids **257:6;** Ladybird's eggs, Ladybird larvae, Ladybird eating an aphid **258:1;** Long-legged Flies 1&2 **259:1**

Clark, Suzanne: Vale **251:3**

Clusker, Joy: *Photo credits: Phaeotrametes decipiens* **259:4**

CSIRO: *Photo credits:* Coral gardens on sea floor **256:11**

Daly, Dr Jon: The use of reproductive technologies in breeding programs for elasmobranchs in aquaria (illus) **257:11.**

*Photo credits:* Shark catch-out at Melbourne Aquarium employing strong plastic sheeting **257:11.**

**DAY GROUP: Reports of Meetings & Excursions:** An Introduction to Invertebrates with Special Reference to Leaf

Litter Fauna (illus) by Maxwell Campbell **250:8&13;** A Visit to the World Heritage Listed Ile de Réunion (illus) by Rob Hamson **251:8-9;** Surveying Fauna in the Gibson Desert (illus) by John Harris (Joan Broadberry) **252:9&12;** Nature Close-up (illus) by Bruce Fuhrer (Joan Broadberry) **253:9-10;** Trees and Forests in Germany & Scotland by Peter Fagg (Joan Broadberry), Middlebrook – An adventure in Conservation (illus) by Hazel & Edward Brentnall (Joan Broadberry) **255:10-11;** Larapinta Trail (illus) by Geoff Lay (Joan Broadberry): An introduction to Microscopy (illus) by Philippa Burgess (Microscopical Group) and Max Campbell (FNCV President) (Joan Broadberry) **257:5-6** Where there's fire there's Smokie (illus) by Phoebe Burns (Joan Broadberry), Where are they now (illus) by Stella Shipway (Joan Broadberry) **258:7-8;** Mullum Mullum excursion (illus) led by Cecily Falkingham (Joan Broadberry) **259:7**

*Photos:* Leaf litter under the dissector, A flatworm, A pseudoscorpion **250:8&13;** map, Réunion Ibis, Cirque de Mafate, 1977 eruption. *Notre Dame des Lave*, Piton de la Fournaise (2632m) with 2010 lava flows, Pahoehoe lava **251:8-9;** *Podaxis berringamensis*, Stinging Nettle stings, *Sphaerobolus stellatus*, *Asterella drummondii*, luminescent *Omphalotus nidiformis*, Mountain Sawfly, *Drosera peltata* sticky tips **253:9-10;** Bass Valley, Dwelling, Nodding Greenhoods **255:10-11;** various including - *Eucalyptus*, *Ptilotus*, *Eremopphila*, *Actinotus*, *Senna*, *Indigofera*, *Mirbelia*, *Callitris*, *Grevillia*, *Spinifex*, *Hakea*, *Gastrolobium*, *Cymbopogon* **256:9-10;** photos of group with microscopes **257:5-6;** Smoky Mouse, Broad-toothed Rat, Broad-toothed Rat scats **258:7-8.**

*Notices:* Future of the Day Group, new coordination team needed **250:7.**

Dilley, Eleanor: *Photo credits:* Crested Pigeon **253:4.**

Drury, Robin: receives the award from Park Victoria for work done by the Fauna Survey on the Eastern Fauna Focus' Project **250:3;** Fauna Survey Group – Warby Ranges Survey report **255:12;** Fauna Survey Group – Survey in the Grampians area **258:9.**

Eadon, Heather: Collecting Indigenous seeds **257:10.**

Eichler, John: *Photo Credits:* Steel-blue Rozites *Cortinarius metallicus* **253:5;** *Amarinus laevis*, *Cantharidis ramburi* **255:13.**

Evans, Deborah (SEANA President): Vale Dick Southcombe **258:3.**

- Fagg, Peter: Day Group - Trees and Forests in Germany & Scotland **255:10**.  
 Falkingham, Cecily: Crossback Stingaree **252:3**; Crested Pigeon (poem) **253:4**; Rare Stick Bird **257:3**; Day Group - excursion to Mullum Mullum creek **259:7**.
- Fall, Peter: Forked Rough Tree-fern (illus) **253:4**. *Photo Credits*: forked Rough Tree-fern **253:4**.
- FAUNA SURVEY GROUP (FSG): Reports of Meetings, Camps, Field trips, Surveys**: Warby Range Survey (illus) by Robin Drury **255:12**; Wilsons Promontory Survey (illus) by Ray Gibson, Survey in the Grampians area by Robin Drury **258:9**; Minimay Camp (illus) (John Harris) **259:10**.  
*Photos*: Microbat *Flasistiellus tasmaniensis* **249:7**; Diamond Firetail, Squirrel Glider, Yellow-footed Antechinus **255:12**; Group processing bats, setting up camera and bait station, "Andrej & Ruby **258:9**; group, Little Forest Bat, Australian Owllet-nightjar **259:10**.  
*Reports to Council*: Bay of Islands survey (illus) **249:7**; Zoo Conservation by Dan Harley **253:7**; Rushworth SF Survey, Update on remote camera study by Euan Ritchie **255:14**; Australian Wildlife Conservancy (AWC) by Zac Lewis, **258:8**.  
*Mammals of Victoria Workshop*: notice 28/2-1/3 **249:9**; **250:1**; Report on seminar (illus) **251:6-7**.  
*Photos*: speakers, Mt Rothwell, various **251:6-7**.
- FNCV PATRON**: Victorian Governor of Victoria, the Hon Linda Dessau (illus) **257:3**.
- FNCV ADMINISTRATION: From the Office (Wendy Gare)**:  
*Direct debit*: reminder to put your name on the direct debit **251:9**.  
*Facebook, FNCV, monitored by to Ian Kitchen*: FNCV 775 signed up **250:3**; thanks to Ian Kitchen for his work **252:3**; 1725 friends **256:12**; 1949 friends **259:11**.  
*Fund Raising: Good Will Wine*: **249:5**.  
*Garden crew*: Working Bee August **252:5**; Thanks to Working Bee helpers 15/6/15 **255:3**.  
*Hall*: Solar Panels savings on electricity **251:4**; new computers **256:12**.  
*Notices*: Geoff Lay is new Council rep for the Fungi Group **255:11**.  
*Office*: Now open 2015 **249:8**; contact **255:11**; notice of Nov-Jan opening times **259:6**.  
*Supplies needed for Hall*: **249:8**; **255:11**; **256:12**.  
*Thanks*: donations **249:8**; donations **257:9**; to FNCV volunteers at the Whitehorse Spring Festival **259:11**.  
*Volunteers Wanted*: Whitehorse Festival 18/10/15, Music from the Wetlands 15/11/15 **256:2**.  
*Working Bee*: Thanks to all who attended the FNCV working bee Saturday 25th July **256:3**.
- FNCV BIODIVERSITY SYMPOSIUM, September**: notice **252:5**; notice **255:7**. Details and registration **246:4**; **255:8**.
- FNCV BOOK SHOP (Kathy Himbeck)**: orders and queries **250:7**; list of books **250:7**; flyer; contact **251:3**; **251:5**; **252:7**; **253:11**; **254:4**; **255:6**; notice of contact **256:10**; **257:6**; **258:3**; news **259:9**.
- FNCV Christmas Party**: 2014 **249:8**; notice for 2015 **257:2**; notice **258:2**; notice **259:3**.
- FNCV COUNCIL**:  
*Annual General Meeting 3 May 2015*: notice **251:10**; minutes (illus) **256:6&12**.  
*Council Members*: Thanks to John Harris, President for the last 6 years (illus, John Harris cutting his farewell pavlova) **253:5**; Introducing the 2015/2016 FNCV Council Members, and thanks to outgoing members (illus) **253:8**; Council Members for 2015 **254:3**.  
*Photos*: 2014/2015 Council Members **253:8**.  
*Nomination form for Council 2015-2016*: **251:12**.  
*SIGS extracts*: Botany, Fauna Survey, Juniors **249:7**; Botany, Juniors **251:10**; Botany, Fungi, Geology, Juniors, Terrestrial Invertebrate **252:8**; Botany, Fauna Survey, Geology, Juniors, Marine Research, Microscopy **253:7-8**; Botany, Fungi, Geology **254:11**; Juniors, Fauna Survey, Fungi, Geology **255:3&14**; Fungi, Geology, Juniors, Terrestrial Invertebrates **256:8**; Botany, Fungi, Geology, Juniors, Microscopy **257:10**; Fauna Survey, Geology, Juniors **258:8**; Botany, Juniors, Microscopy **259:6**.
- FNCV Discounts available**: Gould League books **251:4**.
- FNCV ENVIRONMENT FUND**: Call for Grant Applications, donations welcome **250:11**; donations needed, list of 2015 grants **253:10**.
- FNCV Club Jackets**: for sale **253:3**.
- FNCV LIBRARY NEWS (Gary Presland)**: **250:7**; **251:9**; **252:5**; **256:5**.
- FNCV Members**: Congratulations to those awarded Long-term Membership at AGM Elaine Meehan, Alan Monger, Linden Gillbank, Robert Wood, Colin Douglas (illus - Elaine Meehan, Alan Monger) **256:6**.
- FNCV Membership Category**: **254:14**.
- FNCV Capture and Handling of All Animals**: **251:4**.
- FNCV Second-hand Book Sale 14/3/15**: notice **250:1**; notice **250:11**; report on sale **252:4**.
- FIELD NATS NEWS**:  
*Advertisements*: Coates Wildlife Tours **249:6**; Fauna Survey Group, Mammals of Victoria workshop **249:9**; How to mount &/or frame your own photos by Wendy Clark **252:4**; SEANA spring camp, September **252:5**; Coastal Guide to nature and history by Graham Patterson **254:7**; Coates Wildlife Tours **255:9**; Coates Wildlife Tours **258:10**; Coates Wildlife Tours **259:8**.  
*Advertising Rates*: 251:3; 253:11; 254:3; 255:11.  
*Index for 2014* - issues 238 (February) – 248 (December/January) **250:5-6&9-10**.  
*Notices*: Congratulations to the winners of the FNCV Fund-raising Raffle; Raffle raised \$1535 **249:8**.  
*Thanks to*:  
*Editorial & layout team*- Joan Broadberry, Wendy Gare, Sally Bewsher: FNN 249 **249:5**; FNN 250 **250:9**; FNN 252 **252:5**; FNN 253 **253:3**; FNN 254 **254:9**; FNN 255 **255:3**; FNN 256 **256:10**; FNN 257 **257:9**; FNN 258 **258:12**; FNN 259 **259:6**.  
*Collation & labelling team*: FNN 248 **249:5**; FNN 249 **250:4**; FNN 250 **251:3**; FNN 251 **252:5**; FNN 252 **253:3**; FNN 253 **254:3**; FNN 254 **255:11**; FNN 255 **256:10**; FNN 256 **257:9**; FNN 257 **258:12**; FNN 258 **259:11**.
- Fuhrer, Bruce: Nature close-up **253:9-10**. *Photo Credits*: *Podaxis berringhamensis*, Stinging Nettle stings, *Sphaerobolus stellatus*, *Asterella drummondii*, luminescent *Omphalotus nidiformis*, Mountain Sawfly, *Drosera peltata* sticky tips **253:9-10**.
- FUNGI GROUP: Foray Reports**: Starlings Gap 20/7/14 (illus) (Pat & Ed Grey) **249:11-12**; Wanderslore Sanctuary, Launching Place 27/7/14 (illus) (Pat & Ed Grey) **250:12&14**; Cambarville 26/4/15 (illus) (Pat & Ed Grey) **253:5&12**; Toorong Falls 3/5/15 (illus) (Pat & Ed Grey) **254:8-9**; Mt Worth 10/5/15 (illus) (Ed & Pat Grey) **255:4**; Blackwood 17/5/15 (illus) (Les Hanrahan) **255:5**; Macedon, Sanatorium Lake (illus) (Ed & Pat Grey) **256:7&10**; The Bump, Powelltown 31/5/15 (illus) (Ed & Pat Grey) **257:7-8**; The Ada Tree 7/6/15 (illus) (Ed & Pat Grey) **257:8-9**; Mortimer Reserve, Bunyip 14/6/15 (illus) (Pat & Ed Grey) **258:4-5**; Wanderslore Sanctuary, Launching Place 21/6/15 (illus) (Pat & Ed Grey) **258:5&12**; Woodlands (28/6/15) (illus) (Ed & Pat Grey) **259:4-5**; Greens Bush (5/7/15) (illus) (Pat & Ed Grey) **259:5&12**.  
*Meetings*: The Kindom of Fungi (illus) by Jurrie Hubregtse **254:10-11**.

- Photos:** *Fabraea rhytismoidea*, *Hydnoplicata convoluta* **249:11-12**; *Hygrocybe graminicolor*, *Hygrocybe aurantiopallens* **250:12&14**; Steel-blue Rozites, *Nectria cinnabarina* **253:5**; *Paecilomyces tenuipes*, *Cortinarius phalarus* **254:8-9**; *Hericium coralloides*, *Physalacria australensis* **255:4**; *Amauroderma rude*, *Clavulina rugosa* **256:7**; *Cyptotram aspratium*, *Cantharellus concinnus* **257:7-8**; *Chlorovibrissea bicolor*, *Gymnopus* sp. 'pink furry' **257:8-9**; *Glutinoglossum glutinosum*, *Richenella Swartzii* **258:4-5**; *Inocybe violaciocaulis*, *Beauvaria bassiana* **258:5&12**; *Phaeotrametes decipiens*, *Beauvaria bassiana* **259:4&5**; *Entoloma haastii*, *Entoloma coeruleogracilis* **259:5&12**.
- Reports to Council:** About Fungi by Ian Bell **252:8**; forays and meetings **254:11**; Fungi forays, Work on *Cortinarius* spp. by Reannon Smith **255:14**; July meeting Sapphire McMullan-Fisher gave a presentation about fungal ecology **256:8**; members meeting, speaker cancelled **257:10**.
- Notice:** Geoff Lay is the new Council rep **255:11**.
- Gare, Wendy: *see also From the office*; Parrot rescue (illus) **251:4**.
- Photo Credits:** Turquoise Parrot **251:4**; Leopard Slug **252:3**.
- GEOLOGY GROUP: Meetings:** Snowball Earth (illus) by Dr Peter Jackson (Kaye Oddie) **249:4-5**; Bioluminescence of the Gippsland Lakes (illus) by Phil Hart (Kaye Oddie) **250:4**; The Geological basis of Melbourne's history (illus) by Dr Gary Presland (Graham Paterson) **252:6**; Geology of the Flinders Ranges (illus) by Dr Peter Jackson (Kaye Oddie) **254:6-7**; Geology of the Ile de la Reunion (ill) by Rob Hamson; notice update of new volcanic eruption **256:4-5**; Note - Monash Earth Science Garden (ill) by Kaye Oddie **257:5**.
- Photos:** Snowball Earth, evidence found in Neoproterozoic sediments, chart of isotopes in Late Neoproterozoic rocks **249:4**; Bioluminescence fun play on water, Gippsland Lakes, Bioluminescence on Lake Victoria, Gippsland Lakes, time lapse photograph against the night sky **250:4**; Reunion Island, Plaine des Sables and caldera wall, ash deposit, bamboo phytoliths; Monash Earth Science Garden **257:5**.
- Excursions:** Beaumaris, world-class fossil site led by Professor John Buckeridge (illus) (Rob Hamson) **257:4-5**.
- Photos:** Branching fossil burrow, group examining the fossil log, fossil log, *Lovenia woodsii*, shell lag deposit **257:4-5**.
- Reports to Council:** Nullarbour Plains by Ian Lewis **252:8**; Geology of the Flinders Ranges by Dr Peter Jackson **253:7**; City Buildings excursion by Dr Phil Bock **254:11**; The Central Australian ruby rush by Jim Enever **255:14**; Reunion Island **256:8**; Excursion to Beaumaris **257:10**; Volcanoes of the Western District by Julie Boyce, Cable Bacteria in the Yarra by Prof Perran Cook **258:8**.
- Help wanted:** Geology Committee 2015 **249:5**.
- Notices:** Excursion to Beaumaris 15/8/15 **254:3**.
- George, Paul: **Photo Credits:** *Rhizopogon luteolus* **255:5**; *Inocybe violaciocaulis* **258:5&12**.
- Gibson, Ray: Fauna Survey Group – Wilsons Promontory Survey **258:9**.
- Grey, Ed: *Fungi Group Foray Reports:* **249:11-12**; **250:12&14**; **253:6&12**; **254:8-9**; **255:4**; **256:7&10**; **257:7-9**; **258:4-5&12**; **259:4-5&12**.
- Photo Credits:** *Hydnoplicata convoluta* **249:11-12**; *Clavulina rugosa* **256:7**
- Grey, Pat: *Fungi Group Foray Reports:* **249:11-12**; **250:12&14**; **253:6&12**; **254:8-9**; **255:4**; **256:7&10**; **257:7-9**; **258:4-5&12**; **259:4-5&12**.
- Gouldie, Lisa: Sponges of southern Australia **254:12**.
- Gould League: discount for books **254:3**.
- Hamson, Rob: Trace Fossils at Beaumaris (illus) **250:3**; Can you spot the creature? (Red-lined Geometrid Moth) **251:4**; The Geology of Ile de La Reunion (illus) **256:4-5**; report of excursion to Beaumaris **257:4-5**.
- Photo credits:** Serpulid worm tubes, Professor John Buckeridge indicating fossil worm tubes, *Ophiomorpha beaumarisensis*, location of burrows in Beaumaris Sandstone **250:3**; Red-lined Geometrid Moth) **251:4**; map by mappery.com, Plaine des Sables and caldera wall **256:4**; Branching fossil burrow, group examining the fossil log, fossil log, *Lovenia woodsii*, shell lag deposit **257:4-5**.
- Hamson family: **Photo credits:** map, Réunion Ibis, Cirque de Mafate, 1977 eruption. *Notre Dame des Laves*, Piton de la Fournaise (2632m) with 2010 lava flows, Pahoehoe lava **251:8-9**.
- Hanrahan, Les: Fungi Group Foray Report, Blackwood **255:5**;
- Hartland, Richard: **Photo credits:** *Hygrocybe aurantiopallens* **250:14**; *Cortinarius phalarus* **254:9**; *Hericium coralloides* **255:4**; *Amauroderma rude* **256:7**; *Gymnopus* sp. 'pink furry' **257:8-9**; *Beauvaria bassiana* **259:4**; *Entoloma haastii* **259:5**.
- Harris, John: **From the President:** (illus) **249:1&3**; **250:1**; **251:1**, **252:1&5**.
- Surveying Fauna in the Gibson Desert (illus) **252:9&12**.
- Reports:** Club Christmas Party **249:8**.
- Photo Credits:** Carnaby's Cockatoo **249:1**; *Clathrus archeri* **250:1**; Kea **252:1**; Diamond Firetail, Squirrel Glider, Yellow-footed Antechinus **255:12**.
- Harrowfield, Gillian: **Photo Credits:** Ash deposit **256:5**.
- Hodde, Robert: **Photo Credits:** watercolour of Batman's Hill **252:6**.
- Hubregtse, Jurrrie: Fungi Meeting, The Kingdom of Fungi **254:10-11**.
- Photo credits:** *Hygrocybe graminicolor* **250:12**; *Cortinarius archeri*, *Lycoperdon pyriforme*, *Nidula emodensis* **254:10**.
- Injured Wild-life:** Help for injured wildlife **249:1**; **251:3**; **253:4**; **254:3**; **256:12**.
- Jackson, Dr Peter: Geology of the Flinders Ranges (illus) **254:6-7**.
- Photo credits:** Lithograph, Adelaide Rift Complex, chart, Umberatana tillite, Warren Gorge, Desiccation cracks, Wilpena Pound, Ediacarian fossil
- Dickinsonia* **254:6-7**.
- Jones, Dr Rob: The use of reproductive technologies in breeding programs for elasmobranchs in aquaria (illus) **257:11**.
- Photo credits:** Shark catch-out at Melbourne Aquarium employing strong plastic sheeting **257:11**.
- JUNIORS' GROUP: Brief Reports of Excursions:** (*see: The Junior Naturalist*): "The Big Twitch" (Birds) by Sean Dooley (Louise & Claire) **250:7**.
- Photos:** Group photo, crab, Feather-horned Beetle **252:8**
- Meetings:** How to grow your own Australian Orchids (illus) by Wendy Clark (Horobin Family)
- Reports to Council:** Junior Council talks, excursion to Blue Lotus Watergarden in Yarra Junction **251:10**; Meeting Fauna Survey to the Gibson Desert, Excursion to Phillip Island (illus) **252:8**; Genoa Easter Camp 2015 **253:7**; Scorpions by Max Campbell, excursion to Kinglake NP **255:3**; Nature Photography by Ian Moodie (illus) **256:8**; Beach Birds and the Nesting Project, by Meaghan Cullen **257:10**; Brisbane Ranges Excursion **258:8**; Brisbane Ranges excursion, Baluk Willam Conservation Reserve **259:6**.
- Kitchen, Ian: thanks for his work on Facebook **250:3**; **252:3**.
- Laidlaw, Eileen: **Photo Credits:** *Paecilomyces tenuipes* **254:8**; *Cyptotram aspratium*, *Cantharellus concinnus* **257:7-8**; *Glutinoglossum glutinosum* **258:4-5**.
- Lay, Geoff: The Larapinta trail **256:9** (illus) **Photo Credits:** various incl. – *Eucalyptus*, *Ptilotus*, *Eremophila*, *Actinotus*, *Senna*, *Idigofera*, *Mirbelia*, *Callitris*, *Grevillia*, *Spinifex*, *Hakea*, *Gastrolobium*, *Cymbopogon* **256:9-10**
- Lewis, Phoebe: Persistent organic pollutants and plastic ingestion in the Flesh-footed Shearwaters on Lord Howe Island (illus) **258:11**.

*Photo Credits*: map, landscape, dissection of stomach contents, results of dissection, Giant Clam *Tridacna* **258:11**.  
Lockwood, David: : *Photo Credits*: *Entoloma coeruleogracilis* **259:12**.

Mackenzie, Melanie: RV *Investigator*: a new vessel for marine research in Australia (ill) **256:11**.

*Photo Credits*: RV *Investigator*, Beam trawl aboard RV *Investigator*, Towed camera aboard RV *Investigator* **256:11**.

**MARINE RESEARCH GROUP (MRG): Reports of Meetings & Field Trips: Stauromedusae** in south-eastern Australia – an update (illus) by Audrey Falconer (P Vafiadis) **250:13**; Toora Field Trip Report (illus) by P Vafiadis **251:11**; Toora region field trip cont. (illus) by P Vafiadis **252:11**; Members night, Sponges of southern Australia (illus) by Lisa Goudie (P Vafiadis) **254:12**; Port Campbell Field Trip (illus) by P. Vafiadis **255:13**; RV *Investigator*: a new vessel for marine research in Australia by Melanie Mackenzie (illus) (P Vafiadis) **256:11**; The use of reproductive technologies in breeding programs for elasmobranchs in aquaria (illus) by Dr Rob Jones and Dr Jon Daly (P Vafiadis) **257:11**; Persistent organic pollutants and plastic ingestion in the Flesh-footed Shearwaters on Lord Howe Island (illus) by Phoebe Lewis (P. Vafiadis) **258:11**.

**Photos**: *Lucernariopsis tasmaniensis*, *Lucernariopsis* sp., *Depastroporpha Africana*, *Depastromorpha* sp, *Stenoscyphus* sp, Unknown, *Burnaia heli-cochorda* **250:13**; Toora salt marsh, *Turella* sp., *Atrina tasmanica*, *Eupatagus valenciennesii* **251:11**; *Cornirostra pellucidadiagram*, Foster Beach, *Mictyris ongicarpus*, *M. platycheles* **252:11**; Sponge body plans sketch, *Dromia wilsoni*, nudibranch *Noumea verconis* on its food sponge, *Aplysilla rosea* **254:12-13**; *Amarinus laevis*, Gibson Steps reef 1, Gibson Steps Reef 2, *Cantharidis ramburi*, compiling records, lab work **255:13**; Shark catch-out at Melbourne Aquarium employing strong plastic sheeting **257:11**; map, landscape, dissection of stomach contents, results of dissection, Giant Clam *Tridacna* **258:11**.

**Reports to Council**: **253:7-8**.

**MEMBERS NEWS, PHOTOS & OBSERVATIONS**: New members welcome; Observations from January by Joan Broadberry (illus) Little Falcon chick and Rainbow Lorikeet in Red Flowering Gum **249:3**; New members welcome; Trace Fossils at Beaumaris (illus) by Rob Hanson; Award to Fauna Survey Group for work with the Eastern Fauna Focus project (illus) by Sally Bewsher **250:3**; New members welcome; Christmas Party Raffle, winner and prize (illus) by John McCallum; Can you spot the creature? (illus) by Rob Hamson; Lace Monitor (illus) by Sally Bewsher; Parrot Rescue (illus) by Wendy Gare **251:3-4**; New members welcome; photo of Leopard slug by Wendy Gare; SEANA camp report (illus) by Joan Broadberry; Crossback Stingaree (illus) by Cecily Falkingham **252:3**; New members welcome; Fossils at Jan Juc (illus) by Rob Hamson; Photo of property at Redesdale (illus) by David Cheal **253:3**; Vale John Spenser; Forked Rough Tree-fern (illus) by Peter Fall; Crested Pigeon (poem) (illus) by Cecily Falkingham **253:4**; New members welcome; Council Members for 2015 **254:3**; New members welcome **255:3**; New members welcome; Greetings to Eulalie Brewster, Honorary Member, and her daughter and son-in-law who visited the FNCV from the country (illus); Congratulations to Wendy Clark and Sue Dempsey on receiving 2015 Deakin Community Awards (illus) **256:3**; New members welcome; FNCV Patron, Victorian Governor the Hon Linda Dessau (illus); Rare Stick Bird by Cecily Falkingham **257:3**; New members welcome; Vale Dick Southcombe **258:3**; New members welcome **259:1**

**MICROSCOPY GROUP: Reports to Council**: meeting Sea Stars & Sea Cucumbers by Mark O'Loughlin. **253:8**; Eastern Antarctic Marine Survey by Mark O'Laughlin **257:10**; Members night **259:6**.

Norman, Mark: *Photo Credit*: Crossbak Stingaree **252:3**.

Oddie, Kaye: Geology Group Reports: **249:4-5**; **250:4**; **254:6-7**. Note - Monash Earth Science Garden (ill) **257:5**.

*Photo Credits*: Monash Earth Science Garden **257:5**.

Office, see **FNCV Administration**.

O'Loughlin, Mark: Sea Stars and Sea Cucumbers **253:8**; Eastern Antarctic Marine Survey **257:10**.

**OpticsCentralAffiliate Program**: credit monies to FNCV if members buy binoculars, microscopes etc **253:4**.

Parr, Jeff: *Photo Credits*: Bamboo phytoliths **256:5**.

Paterson, Graham: Geology Group **252:6**.

Penrose, Ian: Saving Lives in the Yarra (illus) **258:6**.

*Photo Credits*: Silver Wattles, Yarra River-keeper doing a survey **258:6**.

**PRESIDENT, From the President: John Harris**: Biodiversity Symposium, Bird-a-day(illus) **249:1&3**; "life in the fast lane" (illus), FNCV second-hand book sale, potential new FNCV President sought **250:1**; Report on Fauna Survey Seminar, with thanks to everyone who helped; \$5000 was raised to purchase equipment (illus) **251:1**; His last presidents report **252:1&5** (illus). **Photos**: Carnaby's Cockatoo **249:1&3**; *Clathrus archeri***250:1**; Kea **252:1**.

**From the President: Maxwell Campbell**: Introduction, biodiversity (illus) **253:1&5**; (illus) **254:1**; (illus) **255:1&3**; (illus) **256:1**; (illus) **257:1**; thanks and acknowledgements for teamwork in organising the Symposium, Biological control in the garden (illus) **258:1**; Flies (illus) **259:1**.

**Photos**: Pseudoscorpion, *Paramedium bursaria* **253:1**; *Mycena subgalericulata* **254:1**; *Chlorohydra viridissima* 1 & 2, *Chlorohydra* sp. budding **255:1&3**; female mantis **256:1**; aphids, Mantids hatching, Huntsman spider & egg case **257:1**; Ladybird's eggs, Ladybird larvae, Ladybird eating an aphid **258:1**.

Presland, Gary: *Library News*: recent additions, access to library holdings on FNCV web site **250:7**; **251:9**; **252:5**; **256:5**

The Geological basis of Melbourne's history (illus) **252:6**.

*Photo Credits*: Profile of Silurian deposits

Richter, Reiner: *Photo Credits*: *Nectria cinnabarina* **253:5**; , *Physalacria australensis* **255:4**; ?*Marasmius* sp **255:5**;

*Chlorovibrissea bicolor* **257:8-9**; *Beauvaria basssiana* **258:5&12**.

Shipway, Stella: Where are they now (illus) **258:7-8**. *Photo credits*: Broad-toothed Rat, Broad-toothed Rat scats **258:7-8**.

Southcombe, Dick: Vale **258:3**.

von Storkirch, Torbjorn: *Photo Credits*: *Richenella swartzii* **258:4-5**.

**TERRESTRIAL INVERTEBRATE GROUP (TIG): Reports to Council**: members night **252:8**.

Terrestrial Flatworms (illus) by Dr Leigh Winsor (Max Campbell) **254:5**; Carol Page showed some photographs from her recent trip to Peninsular Malaysia and Sabah **256:8**; Saving Lives in the Yarra (illus) by Ian Penrose **258:6**.

**Photos**: Terrestrial flatworms 'orange', 'yellow and stripy', black **254:5**; Silver Wattles, Yarra River-keeper doing a survey **258:6**.

**THE VICTORIAN NATURALIST**: requests for members to receive it on-line **252:4**.

Vafiadis, Platon: *Marine Research Group Reports*: Toora Field Trip **251:11**; Toora Field Trip cont. **252:11**; **254:12-13**;

Port Campbell Field Trip **255:13**; **256:11**; **257:11**; **258:11**.

*Photo Credits*: Toora salt marsh, *Turella* sp., *Atrina tasmanica*, *Eupatagus valenciennesii* **251:11**; Foster Beach, Shallow Inlet *Mictyris longicarpus* and *M. platycheles* **252:11**; *Dromia wilsoni*, nudibranch *Noumea verconis* on its food sponge, *Aplysilla rosea* **254:12-13**.

**Vale**: Suzanne Clark **251:3**; John Spencer **253:4**; Pip Winter **255:3**; Dick Southcombe **258:3**.

Wennstrom, Anders: *Photo Credits*: Sue & Ray setting up a camera and bait station **258:9**.

Windsor, Dr Leigh: Terrestrial Flatworms (illus) **254:5**.

*Photo Credits*: Terrestrial Flatworms 'orange', 'yellow and stripy', black **254:5**.

Winter, Pip: vale **255:3**.

An enormous thank you from the FNN editorial team to Pat Grey for compiling the index. Your work is very much appreciated.



## FNCV Environment Fund: Call for Grant Applications

The FNCV Environment Fund has been set up to support the objectives of the Club in relation to the environment.

The FNCV Environment Fund has the following purposes:

- To support and finance environmental research, in particular research into the biodiversity of Victoria.
- To support and finance dissemination of information on the natural environment by any legitimate means, including public lectures, seminars, field trips, courses and publications.
- To support and finance practical projects aimed at preserving and enhancing the biodiversity of Victoria.

The FNCV Environment Fund is administered by a committee consisting of Malcolm Calder (Chair), Barbara Burns, (Secretary & Treasurer), Bob Rogers, John Harris, Ian Moodie and Cathy Willis.

**The Committee calls for applications for the next round of funding from the FNCV Environment Fund. Requests for projects between \$200 & \$1,000 will be considered.**

Applications can be from organisations or individuals, but in the latter case must be supported by an organisation. Suitable organisations are established natural history or environmental organisations (Field Naturalist Clubs, Landcare Groups etc.), educational institutions or government departments. Multiple applications from one research group are not encouraged.

Applications for this round of funding close **Monday 4th April 2016**. All applications will be acknowledged and results of applications communicated by **22 April 2016**. Late applications will not be accepted.

Successful projects are required to be completed within 12 months of receipt of funding, with a report supplied on completion. The report will be published by FNCV and successful applicants are encouraged to communicate their results to the Club via articles, talks or field trips.

**Additional information about the Environment Fund is available at [www.fncv.org.au](http://www.fncv.org.au).**

Please include the following information in the application:

- Project Title.
- Project description (max 250 words).
- How the project meets the aims of the fund.
- Budget (include GST in all relevant items). (Also indicate other sources of funding)
- Indicate if the application is from an individual or organisation and give the name of the individual or organisation.
- Applicant name and contact details (including mailing address/phone/email).
- Signature of applicant.
- Endorsement of organisation (signature of responsible person such as President, Secretary, Manager, Head of Department, include name and position held).

Donations to the FNCV Environment Fund are  
**TAX DEDUCTIBLE.**  
 Donations are always welcome and donation forms can be downloaded from the website: [www.fncv.org.au](http://www.fncv.org.au) or are available on request from the FNCV Office. Phone 9877 9860 or email: [admin@fncv.org.au](mailto:admin@fncv.org.au)

**Applications should be sent to:**  
**Secretary FNCV Environment Fund**  
**Field Naturalists Club of Victoria**  
**PO Box 13,**  
**Blackburn Vic 3130**



*Understanding  
Our Natural World*  
Est. 1880

## From the Office.....

January has gone and we're up to the March issue of the News already! The turnout for the last collation was heartening – 16 much appreciated members came along! (See list on page 3) There were new and long term members working side by side, finishing the work in no time, probably fuelled by the chocolate biscuits served up. Thank you all very, very much! Please come again because we loved having you here.

I also want to thank the many members who have changed to receiving the email version of both the *Field Nats News* and *The Victorian Naturalist*. You're making a positive contribution to your Club by doing this, and from the feedback I've received, you're enjoying seeing the photos in glorious colour as an added bonus.

### Donations of goods for the hall

We're starting to run a bit low on toilet paper – eco-friendly paper preferred please.

Printer paper for the office is always welcome, and so are nice bikkies (for the kitchen, not for the office).

**Wendy Gare**





## Fungi Group

FORAY

26 JULY 2015

### WHITE'S CORNER, NEAR GEMBROOK

WHITE'S CORNER

Three years after the burn

Shrubby Foothill Forest is dominated by Messmate *Eucalyptus obliqua* and Narrow-leaf Peppermint *E. radiata*. The understorey is typically dry and partially heathy in character and includes a range of shrubby wattle species and other shrubs, and grasses. The understorey had grown and become quite dense mostly consisting of Hop Goodenia *Goodenia ovata*, Dusty Miller *Spyridium parvifolium*, Hazel Pomaderris *Pomaderris aspera* and Handsome Flat-pea *Platylobium formosum*.

This fourth foray to the 'burn' was our last foray for this season. It was noticeable for the very cold, windy weather and the overall strong growth of *Goodenia ovata* which made finding fungi difficult. We welcomed Marc Campobosto and Faye Campbell to our group. Many thanks are due to our members for their keenness in spotting fungi when they

were scattered and scarce as well as for their help in identification.

One of the early finds was several small young specimens of Cramp Balls *Daldinea grandis (concentrica)* growing on several logs. At first we did not recognise the fawn, very tiny hemispherical balls on one fallen branch, because we usually see them much bigger and the charcoal-black colour of old specimens. However, a second log showed some more mature specimens (c 15 mm round) and Virgil Hubregtse cut open one of the hard balls to reveal the concentric growth zones. This might indicate that the young ones start to appear in late July. The small shell-like brown cap and brown gills of *Melanotus hepatochrous* were growing on dead wood. Faye Campbell was first to see them and numbers of them were seen subsequently. This species has a tiny, lateral knob-like stem, and a purple-brown spore print.

While fungi were generally scarce one exception was the Brick-brown Cordyceps *Cordyceps menesteritis (menesteridis)* (Marc Campobosto—see below, discovered the first specimens and then everyone started finding them, usually individual specimens scattered throughout the undergrowth. Previously this small (to 25 mm above ground), pale-stemmed species with an orange-brown oval head had been found once at each of the two earlier forays here (2012, 2013). We were able to excavate two complete examples with the mummified beetle larva attached. (often Darkling Beetles *Meneristes australis*) and a collection was made for the RBG Mel-

bourne Herbarium.

Reiner Richter then came up with a single fruit-body of the jelly Yellow Brain *Tremella mesenterica* on a small dead branch. This golden yellow, soft gelatinous and convoluted jelly dries to bright orange. He then followed up with the black-capped, tough, leathery, toothed *Phellodon niger*, 'white tooth', found growing in the ground. Underneath the cap were four major black and woody stems and a larger central stem divided at the top into four smaller stems. This looks as though there were several fruit-bodies fused together to make one irregularly formed cap. Under the cap were the short, blunt greyish-white teeth that produce a white spore print. This species can be differentiated from the similar-looking toothed *Hydnellum auratile* by its dark depressed cap, pale grey teeth and white spore print. *H. auratile* 'brown tooth' has a tough; brown zoned cap, brown stem, and teeth that turn brown with maturing spores. *P. niger* is supposed to smell like fenugreek, but the day was so cold it was difficult to smell anything!

One of the intriguing finds was by Janet McClean. This was the leather *Stereum ochraceoflavum*, identified by Richard Hartland who had noted it in *A Field Guide to Tasmanian Fungi* (2014) by Genevieve Gates and David Ratkowsky, p 182. and growing on a fern stem. It has a whitish, extremely hairy upper surface and a smooth and felty, pale fawn fertile surface. This small (7 mm diam) specimen had a central attachment and was conic in shape, but a group may coalesce along twigs or small plant stems to form a resupinate single fruit-body often with shelving. There was another minute (2 mm diam) young fruit-body next to it that appeared flat on the substrate. Interestingly the hairs on the upper surface all point towards the margin. This extremely hairy upper surface might have suggested that it was a *S. hirsutum*, but the hairs were whitish and the substrate was a fern stem as opposed to the larger pieces of wood that *S. hirsutum* inhabits. This was the first time that *S. ochraceoflavum* had been recognised by the group.

Then Richard Hartland showed us a rotting piece of wood with a number of the pored *Coltriciella dependens* (photo 7), which we had first seen in the Grampians in 2014. The fruit-body



*Cordyceps menesteritis*  
Photo: Richard Hartland



normally hangs down (pendent) from the underside of the substrate, so that the pores are outermost, and has been described as being like a small wasp comb. *C. dependens* has a finely hairy, rusty-brown, circular outer surface, a rough-looking brown stem and angular rust-coloured pores. The outer hairy surface folds over at the margin partially covering the pores which are creamy and turning brown with maturing spores. All growth stages were present from the simple rod which then expands at the apex into an ovate shape followed



*Austropaxillus muelleri*  
Photo: Richard Hartland

by an opening out at the 'top' revealing the angular pores.

At the end of the foray, Janet felt that she had rounded out her day by finding the first fungus – the Funnel-cap *Austropaxillus infundibuliformis*, noted for its yellow-orange, funnel-shaped cap, decurrent, forking gills and brown spore print. Then finding some puzzling white fruit-bodies in a cluster on the ground, which, because of the pale cap and pale forked gills with no hint of brown spores, we thought might be the somewhat similar *Hygrophoropsis aurantiaca* which, in contrast to *A. infundibuliformis*, has a white spore print. However, Virgil Hubregtse found that the spore print was brown and with microscopical analysis discovered that

it was *Austropaxillus muelleri* (phot below), another species that we have not recognised before. Virgil made the following comment "Microscopically, the spores and basidia of this species closely resemble those of *A. infundibuliformis* (See Larger Fungi of South Australia by CA Grgurinovic 1997. pp. 203-205); however, *A. infundibuliformis* has clamp connections, whereas *A. muelleri* does not. Jurrie Hubregtse found a 2014 thesis by Juan Pablo Tejena Vergara (Universidad de Chile), which showed that *A. infundibuliformis* is in a separate clade from *A. muelleri*. A photo of Mueller's Funnel Cap *A. Muelleri* by Neale Bougher can be seen in the current version of Perth Urban Bushland Fungi, page J64, on the net". Here is what it said "In litter. Mycorrhizal. Cap up to 65 mm wide, funnel-shaped. Gills forked and running part way down stem. Stem up to 50 mm tall, tapering, no ring. Spore print bright brown."

Thanks to Virgil Hubregtse and Jurrie Hubregtse for their contribution to the report. Thanks to the photographers Marc Campobosto, Richard Hartland, Reiner Richter and Torbjorn von Strokirch.

Ed and I would like to say a huge thank you to all those enthusiastic forayers who searched for fungi throughout the season, and to those who have made our job easier by contributing to the reports and species lists, and providing photos. We are indebted to Virgil and Jurrie Hubregtse for their detailed identification work.

Pat Grey & Ed Grey

*The views and opinions expressed in this publication are those of the authors and do not necessarily reflect those of the FNCV.*

[bookshop@fncv.org.au](mailto:bookshop@fncv.org.au)

for any orders or bookshop queries. If you don't have access to email, the FNCV office will pass on your message. Kathy will then be in contact with you.

### South East Aust. Naturalists' Association (SEANA)

The SEANA Autumn Camp (which does not necessarily involve camping) will be hosted by the Geelong Field Naturalists Club on the Bellarine Peninsula on 8th—11th April 2016. Information and registration for this event is not available as FNN goes to press. Please contact Club directly on: Geelong Field Naturalists Club Inc. P.O. Box 1047 Geelong, Vic. 3220 e-mail: [info@gfnc.org.au](mailto:info@gfnc.org.au)

Due to the Australian Naturalist Network Get-together in Western Australia there will be no SEANA Spring Camp held in 2016.

### Australian Naturalists Network (ANN)

An outline of the ANN get-together in Western Australia including pre and post tours were published on p3 of FNN 259 (December/January 2016). The core event is to be held close to Fremantle between Saturday 1st Oct and Sunday 9th 2016. A detailed program and enrolment document has been circulated electronically from the FNCV office. The WA contact is [mlarke@iinet.net.au](mailto:mlarke@iinet.net.au)

Anyone without access to a computer can contact the FNCV office directly.

**If you find injured wildlife:**  
**Wildlife Victoria**  
1300 094 535  
**Help for Wildlife**  
0417 380 687

Will connect you to your nearest suitable wildlife shelter

**PUT THESE NUMBERS IN YOUR PHONE NOW.**





**Marine Research Group  
Survey at Martha Point  
Sunday 17th January**

Platon Vafiadis will be reporting in detail on this survey in a later issue of FNN. In the interim, here are a few photos and an observation.

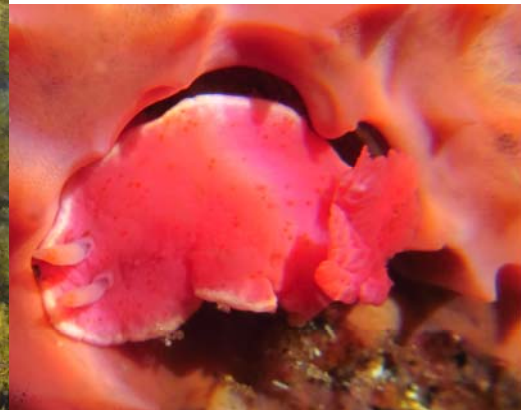
It was a beautiful weekend summer day and our group (pictured left) shared the rock platform with other beachgoers.

The image, below left, is of an upturned rock showing large patches of pink sponge on which the nudibranch, *Noumea haliclona* feeds. This animal has several colour forms. The Victorian form has a pink body and mantle, a white edge to the mantle with scattered orange-red spots. The colour of *Noumea haliclona* matches exactly their food sponge and can be considered most likely to be cryptic.

**JB**

NB. Rocks turned during MRG surveys are always put back in place.

Photos: **Joan Broadberry**



**Field Nats News 261**



The Field Naturalists Club of Victoria Inc.  
P.O. Box 13  
BLACKBURN VIC 3130  
Reg.No. A0033611X

**PRINT  
POST  
100002072**

**POSTAGE  
PAID  
AUSTRALIA**